

Class B and C Government SCEC Endorsed Security Cabinets



Multifile Class B and C Lock Security cabinets are cabinets approved and manufactured to meet the requirements of the Security Construction and Equipment Committee (SCEC), SCEC is the standing interdepartmental committee responsible for the evaluation of security equipment used by Australian Government departments and agencies. These cabinets are SCEC Endorsed for the storage of government documents.

View our complete Range of SCEC Endorsed Security Cabinets

Class B SCEC Endorsed Filing Cabinets

Featuring Kaba X-10 Digital Lock
Available in 1, 2, 3 or 4 Drawers

Class C SCEC Endorsed Filing Cabinets

Featuring Bi-Lock Key Lock
Available in 1, 2, 3 or 4 Drawers



Class B SCEC Endorsed Swing Door Cabinets

Featuring Kaba X-10 Digital Lock

Class C SCEC Endorsed Swing Door Cabinets

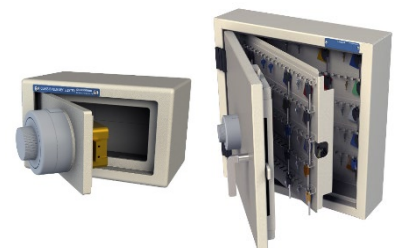
Featuring BiLock Key Lock



Class B and Class C Key Cabinets

100 or 300 Key Capacity

Class B Blister Pack



Class B – SCEC Endorsed File Cabinets with X-10 Kaba Digital Lock



CLASSIFIED



The Class B SCEC Endorsed Filing Cabinet is designed for the secure and compliant storage of documents for Government Departments and Agencies

FEATURES:

- SCEC endorsed X-10 Kaba Digital Lock
- Heavy-duty slides guaranteed for 100,000 operations
- Double-skin top prevent access to the top drawer and locking system
- Recessed drawers with minimum gap clearance to prevent forced opening of drawers
- Heavy duty barrier panels between drawers to prevent access from one drawer to another
- Anti-tilt mechanism to prevent more than one drawer from being opened at a time

CONSTRUCTION:

- 1.6mm fully welded steel body
- 5.0mm drawer fronts
- Lock mounted on 5mm steel plate

COLOUR: Available in Dulux Powercoat Standard ripple power coats available in 19 colours/finishes



X-10 Kaba Digital Lock

REQUEST A CALL BACK FOR IMMEDIATE QUOTE!

Dimensions:

No. Drawers	Security Level	Height (mm)	Width (mm)	Depth (mm)	Weight (KG)
One Drawer	Class B X-10 Kaba Digital Lock	385	512	725	65
Two Drawer	Class B X-10 Kaba Digital Lock	670	512	725	95
Three Drawer	Class B X-10 Kaba Digital Lock	1025	512	725	135
Four Drawer	Class B X-10 Kaba Digital Lock	1340	512	725	174

- All depth dimensions include handles
- One and Two Drawer designed for under desk placement

Class C – SCEC Endorsed File Cabinets with Bi-Lock



The Class C SCEC Endorsed Filing Cabinet is designed for the secure and compliant storage of documents for Government Departments and Agencies

CONSTRUCTION:

- 1.6mm fully welded steel body
- 5.0mm drawer fronts
- Lock mounted on 5mm steel plate



SCEC Approved Bi-Lock

FEATURES:

- Heavy-duty slides guaranteed for 100,000 operations
- SCEC Endorsed Bi-Lock
- Double-skin top prevent access to the top drawer and locking system
- Recessed drawers with minimum gap clearance to prevent forced opening of drawers
- Heavy duty barrier panels between drawers to prevent access from one drawer to another
- Anti-tilt mechanism to prevent more than one drawer from being opened at a time

COLOUR: Available in Dulux Powercoat Standard ripple power coats available in 19 colours/finishes

Dimensions:

No. Drawers	Security Level	Height (mm)	Width (mm)	Depth (mm)	Weight (KG)
One Drawer	Class C B-Lock (Key)	385	510	725	48
Two Drawer	Class C Bi-Lock (Key)	670	510	725	83
Three Drawer	Class C Bi-Lock (Key)	1025	510	725	122
Four Drawer	Class C Bi-Lock (Key)	1340	510	725	160

- All Depth dimensions include handles
- One and Two Drawer are designed for "Under Desk" placement

Class B – SCEC Endorsed Swing Door Cabinets



The Class B SCEC Endorsed Swing Door Cabinet is designed for the secure and compliant storage of documents for Government Departments and Agencies

CONSTRUCTION:

- 1.6mm fully welded steel body
- 5.0mm drawer fronts
- Lock mounted on 5mm steel plate

FEATURES:

- SCEC approved X-10 Kaba Digital Lock
- Indirect locking system that prevents forcing of the locking mechanism
- Heavy-duty hinges
- Recessed doors with minimum gap clearance to prevent forced opening of doors
- Adjustable Shelves



X-10 Kaba Digital Lock

COLOUR: Available in Dulux Powercoats Standard ripple power coats available in 19 colours/finishes

REQUEST A CALL BACK FOR IMMEDIATE QUOTE!



Featuring fully adjustable shelves
Additional Shelves available on request

Dimensions:

Security Level	Height (mm)	Width (mm)	Depth (mm)	Weight (mm)	Shelves
Class B, X-10 Kaba Digital Lock	1350	920	555	95	3
Class B, X-10 Kaba Digital Lock	1840	920	555	130	4

- Please note depth is 500mm deep at floor and 555mm deep including handle.
- Come with adjustable shelves.

Class C – SCEC Endorsed Swing Door Cabinet



The Class C SCEC Endorsed Swing Door Cabinet is designed for the secure and compliant storage of documents for Government Departments and Agencies

CONSTRUCTION:

- 1.6mm fully welded steel body
- 5.0mm drawer fronts
- Lock mounted on 5mm steel plate

FEATURES:

- SCEC approved Bi-Lock mechanism protected by a separate metal panel
- Indirect locking system that prevents forcing of the locking mechanism
- Heavy-duty hinges
- Recessed doors with minimum gap clearance to prevent forced opening of doors
- Adjustable Shelves



SCEC Approved Bi-Lock

COLOUR: Available in Dulux Powercoats
Standard ripple power coats available in 19 colours/finishes

REQUEST A CALL BACK FOR IMMEDIATE QUOTE!



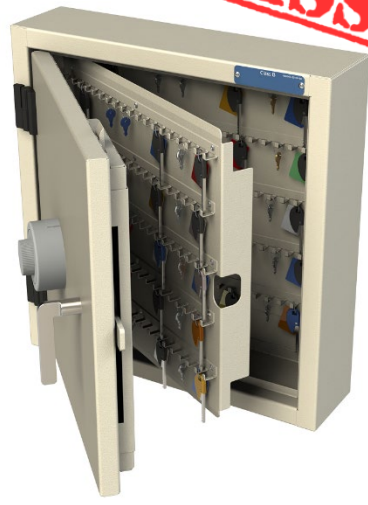
Featuring fully adjustable shelves
Additional Shelves available on request

Dimensions:

Security Level	Height (mm)	Width (mm)	Depth (mm)	Weight (mm)	Shelves
Class C Bi-Lock (Key)	1350	920	555	85	3
Class C Bi-Lock (Key)	1840	920	555	125	4

- Please note depth is 500mm deep at floor and 555mm deep including handle
- Comes with adjustable shelves

Class B and C – SCEC Endorsed Key Cabinets



CLASSIFIED

The SCEC Endorsed Key Cabinets are designed for the secure and compliant storage of Keys for Government Departments and Agencies

Features:

- Wall Mounted
- Tamper evident fully welded 2mm zinc anneal steel construction
- Corrosion resistant
- 6mm anti-drill plate
- Recessed door with 2mm clearance between the door and the frame to resist crowbar attacks.



X-10 Kaba Digital Lock

Locks:

- Class B Lock is a SCEC Endorsed X-10 Kaba lock advanced digital security which can be fully auditable
- Class C Lock is a SCEC endorsed Bi-lock



SCEC Approved Bi-Lock

Available in either 100 and 300 Key Capacity

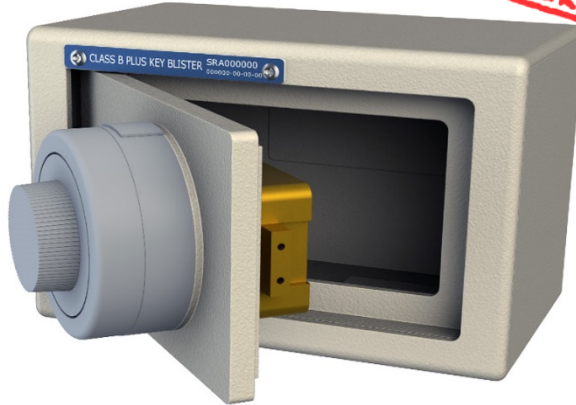


REQUEST A CALL BACK FOR IMMEDIATE QUOTE!

Dimensions:

Security Level	Key Capacity	Height (mm)	Width (mm)	Depth (mm)	Weight (kg)
Class C Bi-Lock (key)	100	525	500	125	28
Class B Kaba Digital Lock	100	525	500	125	35
Class C Bi-Lock (key)	300	525	500	125	33
Class B Kaba Digital Lock	300	525	500	125	40

Class B SCEC Endorsed Blister Pack



CLASSIFIED

The SCEC Endorsed Blister Pack is designed for the secure and compliant storage of Keys typically used in secure office environments

Product Information:

Class B + Key Blister security containers are typically used in secure office environments. Consisting of a fully welded 5mm steel body with a hinged door secured by a SCEC Approved Class B KABA X-10 lock.

These smaller key cabinets are specifically designed to be secured in a manner which provides positive protection against covert entry.

The ideal mounting method is to be recessed within a wall or column. Cabinets must be installed in accordance with SCEC working note 2/84



X-10 Kaba Digital Lock

Features:

- 5mm Hot Rolled Steel Construction
- 10mm manganese anti-drill plate
- Textured electrostatic powder coat - corrosion resistant finish the door and the frame to resist crowbar attacks.
- SCEC Endorsed Kaba X-10 Class B Lock
- Colour Mannex Suede

REQUEST A CALL BACK FOR IMMEDIATE QUOTE!

Dimensions:

Security Level	Height (mm)	Width (mm)	Depth (mm)	Weight (kg)
Class B Blister Pack with Kaba X-10 Digital Lock	160	230	150	14